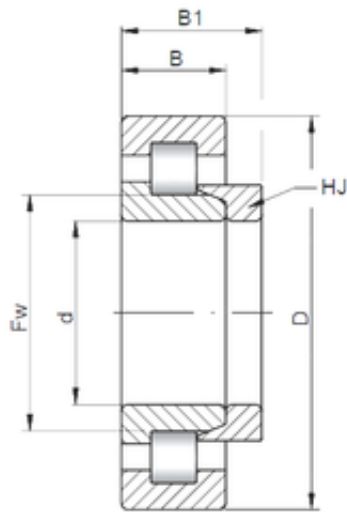




## ISO BEARING-SINGAPORE (PTE)LTD.



280 mm x 580 mm x 175 mm ISO NH2356  
cylindrical roller bearings

Bearing No. NH2356

Dimensione	280x580x175 mm
Marchio	ISO
Diametro del foro	280 mm
Diametro esterno	580 mm
Larghezza	175 mm
d	280 mm
D	580 mm
B	175 mm
C	175 mm
B1	26 mm
B2	58,5 mm

NH2356 Bearing 2D drawings and 3D CAD models